

VISUAL IMPACT ASSESSMENT

68-72 RAILWAY PARADE AND 2-2A, 4-10 OXFORD STREET

PACIFIC PLANNING

aleksandar
design group



PACIFIC PLANNING

aleksandar
design group

41 Albion Avenue,
Paddington NSW 2021

T: 02 9361 5560
E: mj@aleksandar.designgroup.com.au
www.aleksandar.designgroup.com.au

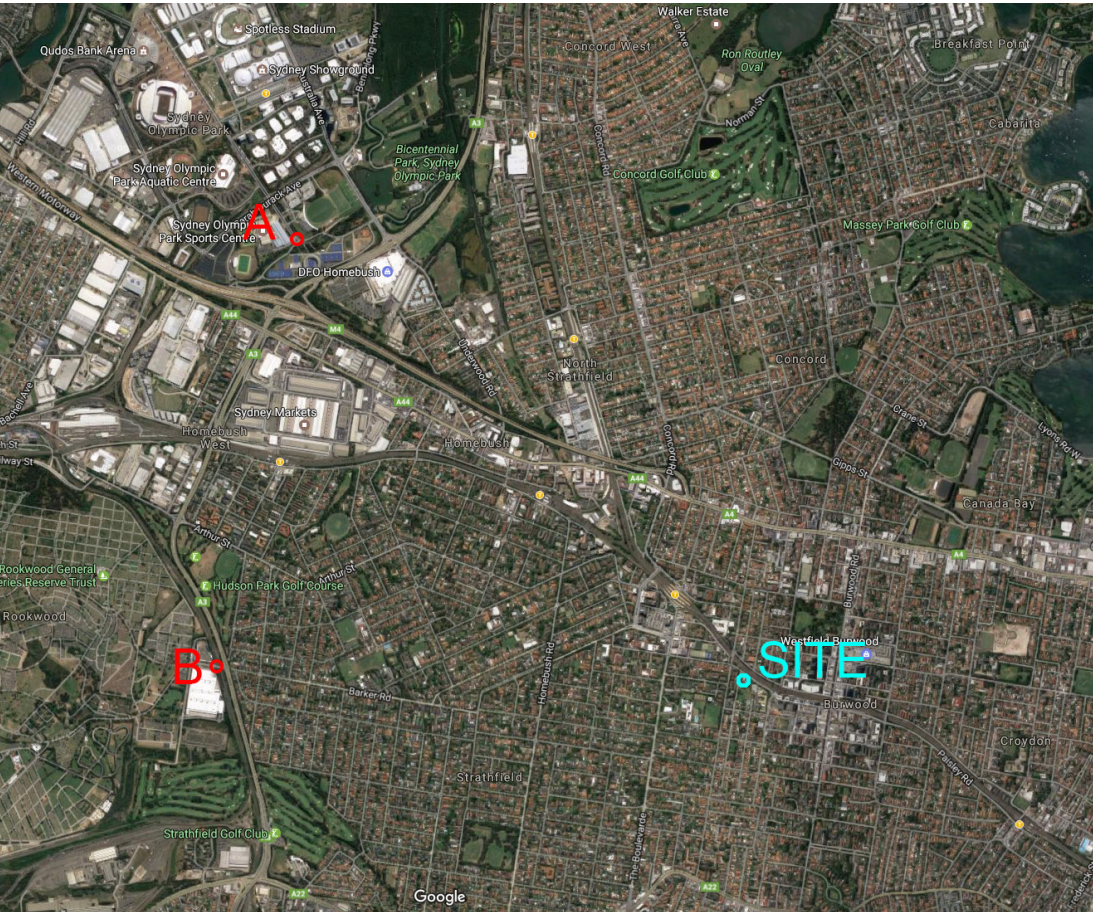
Nominated Architect:
Aleksandar Jelcic
Registration No. 7167

© Copyright Aleksandar Design Group PTY LTD

Revisions:

Revision A May 2017





A - 3.84 km to site



B - 2.95 km to site



E1 - Cnr Park Rd and Gladstone St



E2 - Park Rd near Railway Crescent



E3 - Cnr Railway Parade and Conder St



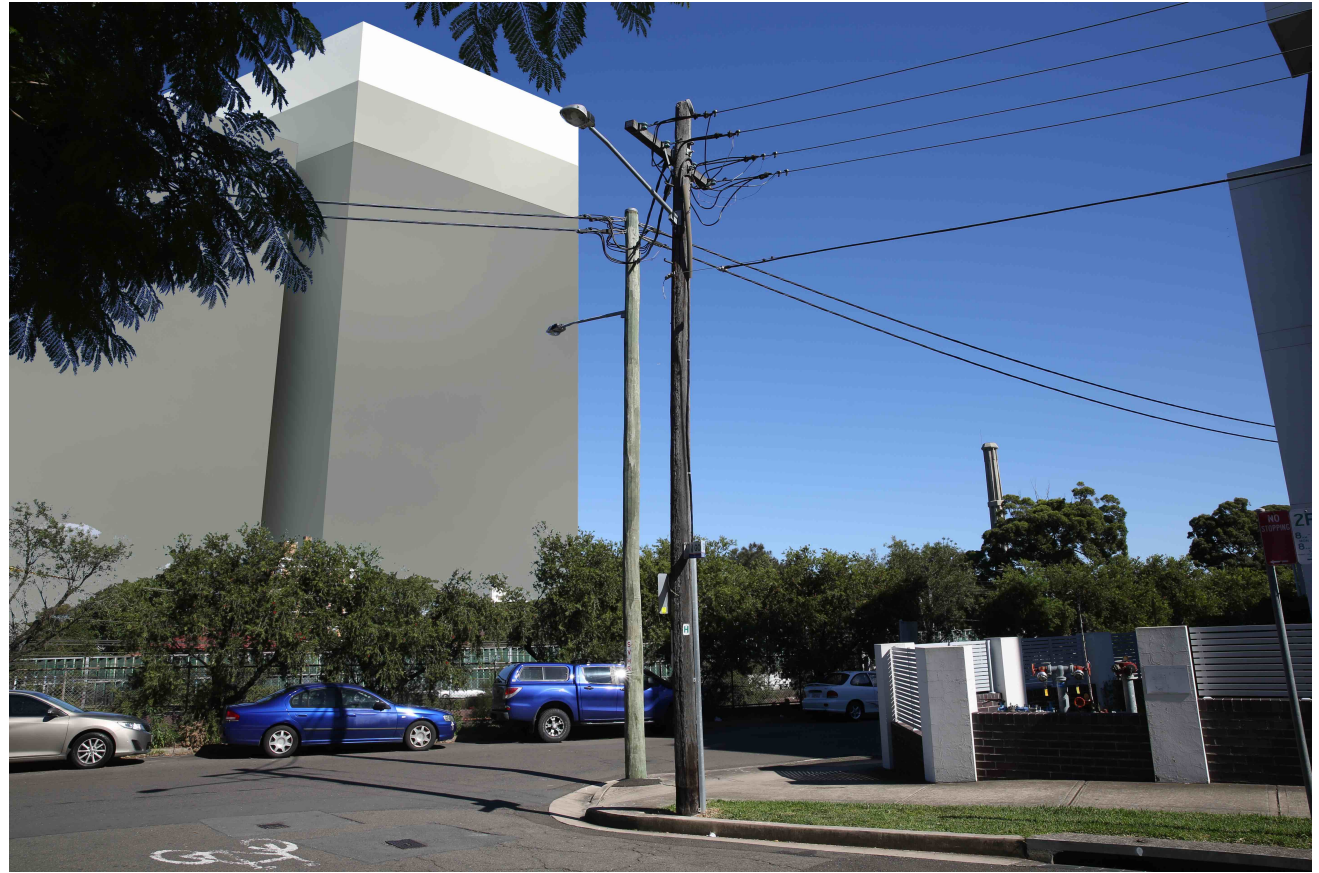
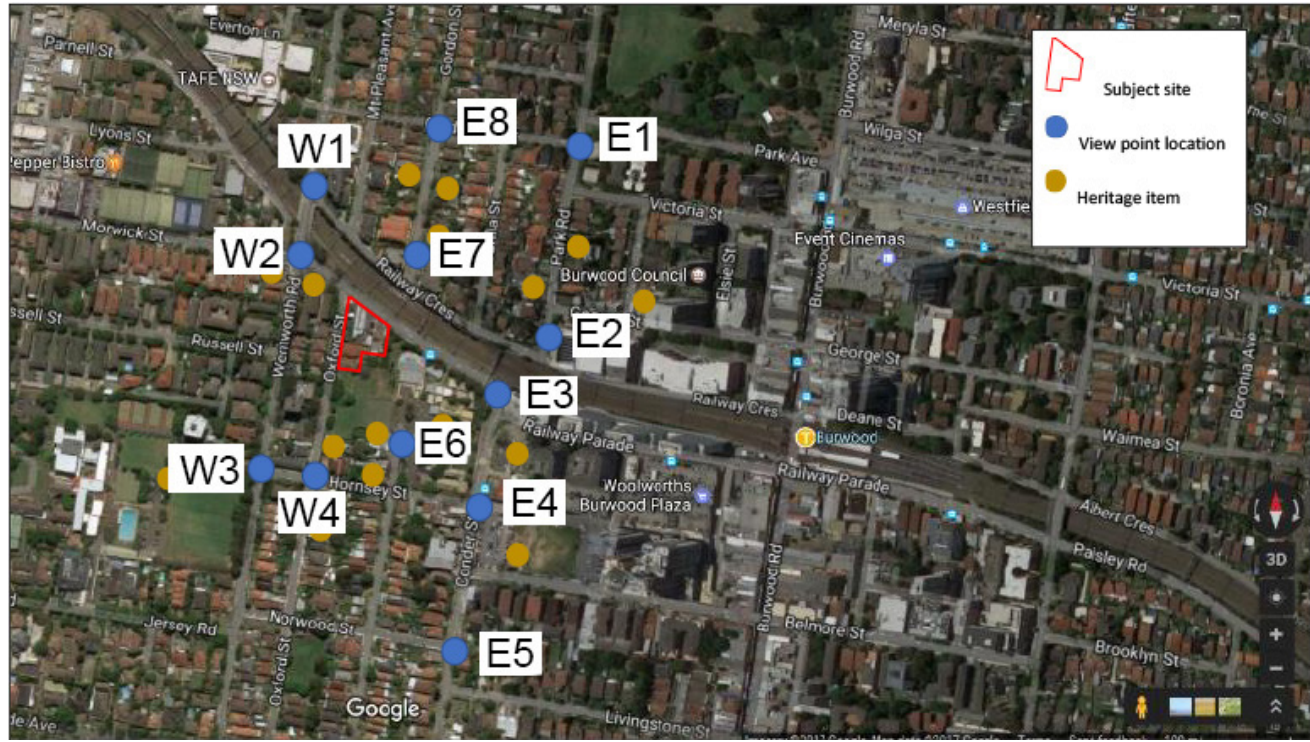
E4 - Cnr Honsey St and Conder St



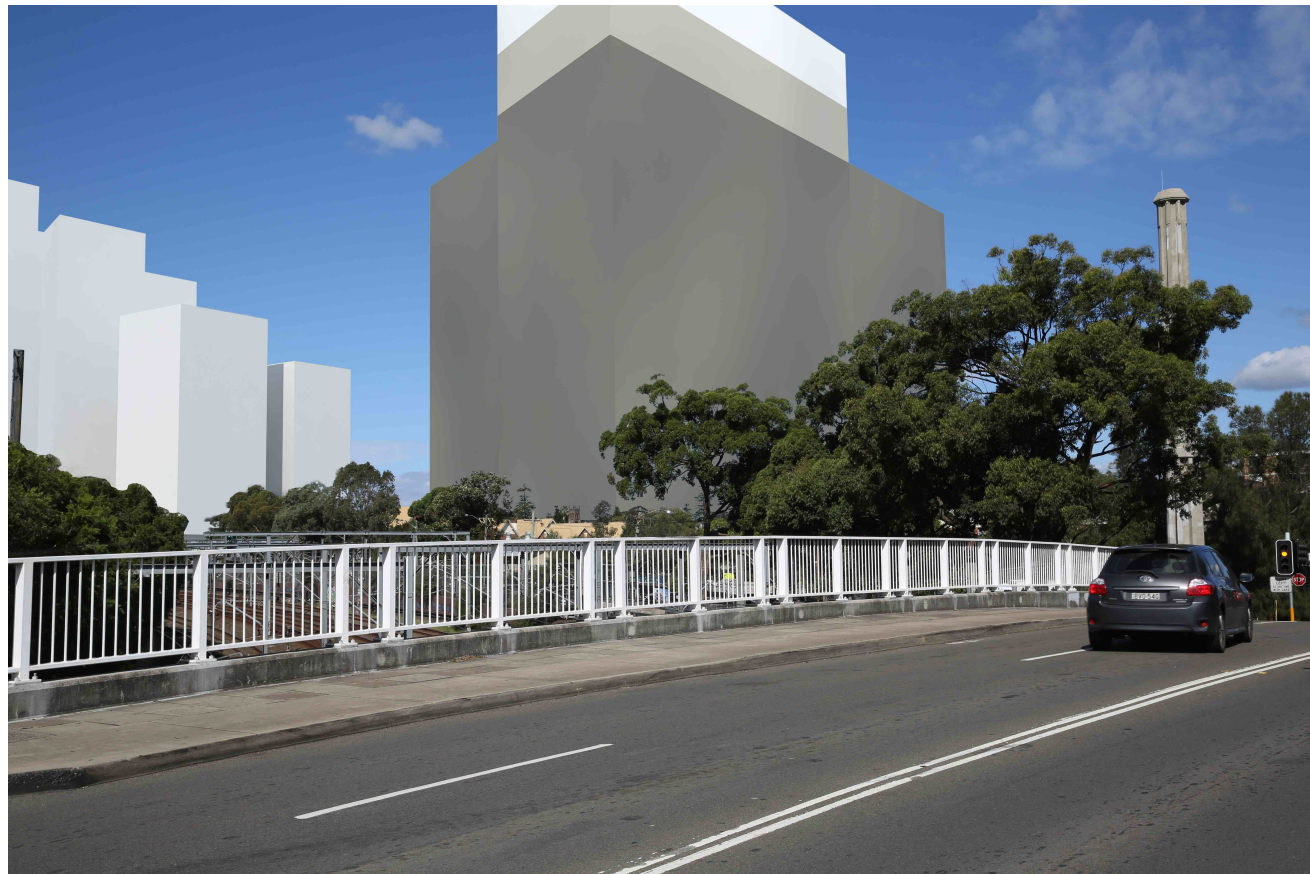
E5 - Cnr Norwood St and Conder St



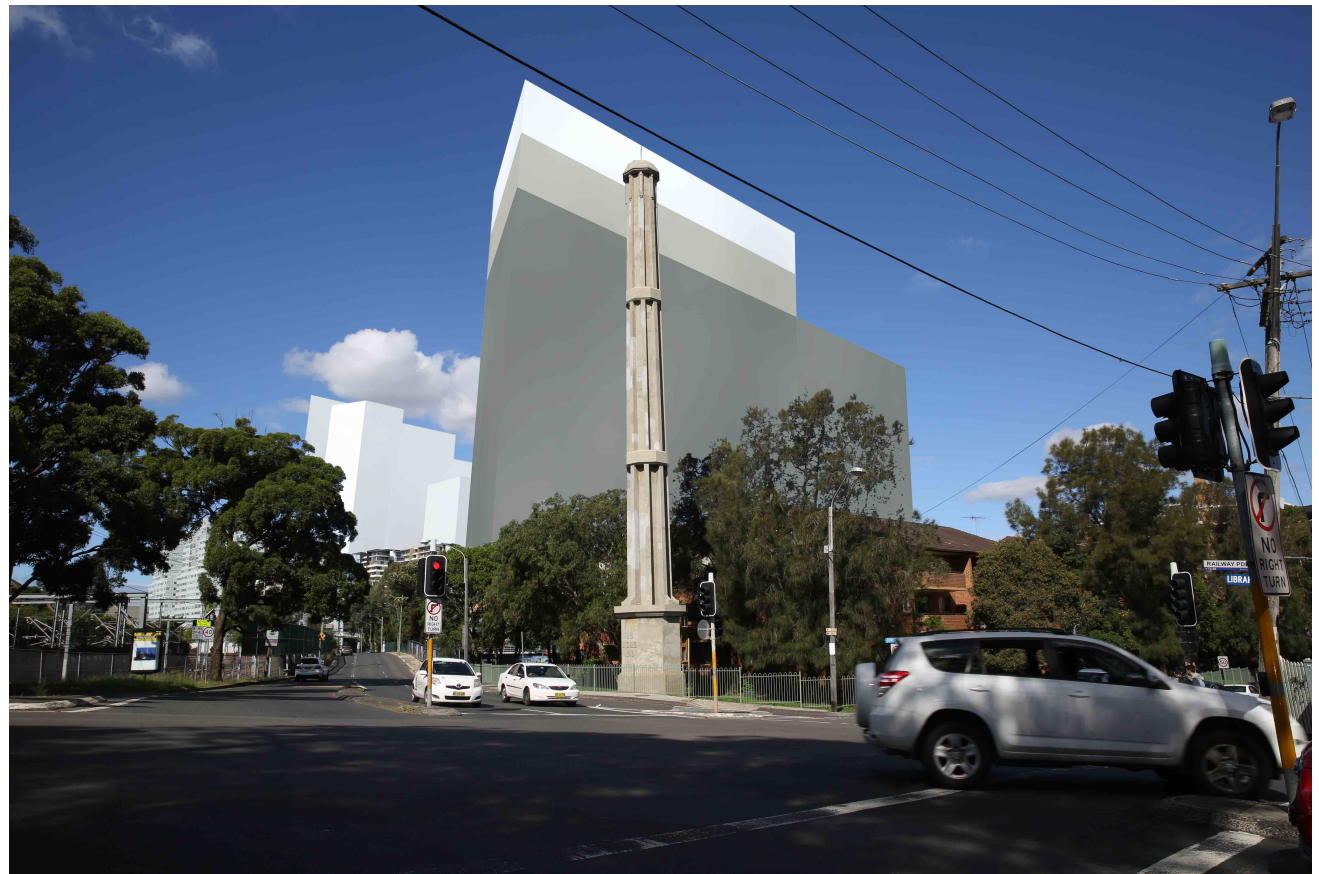
E6 - Stanley St



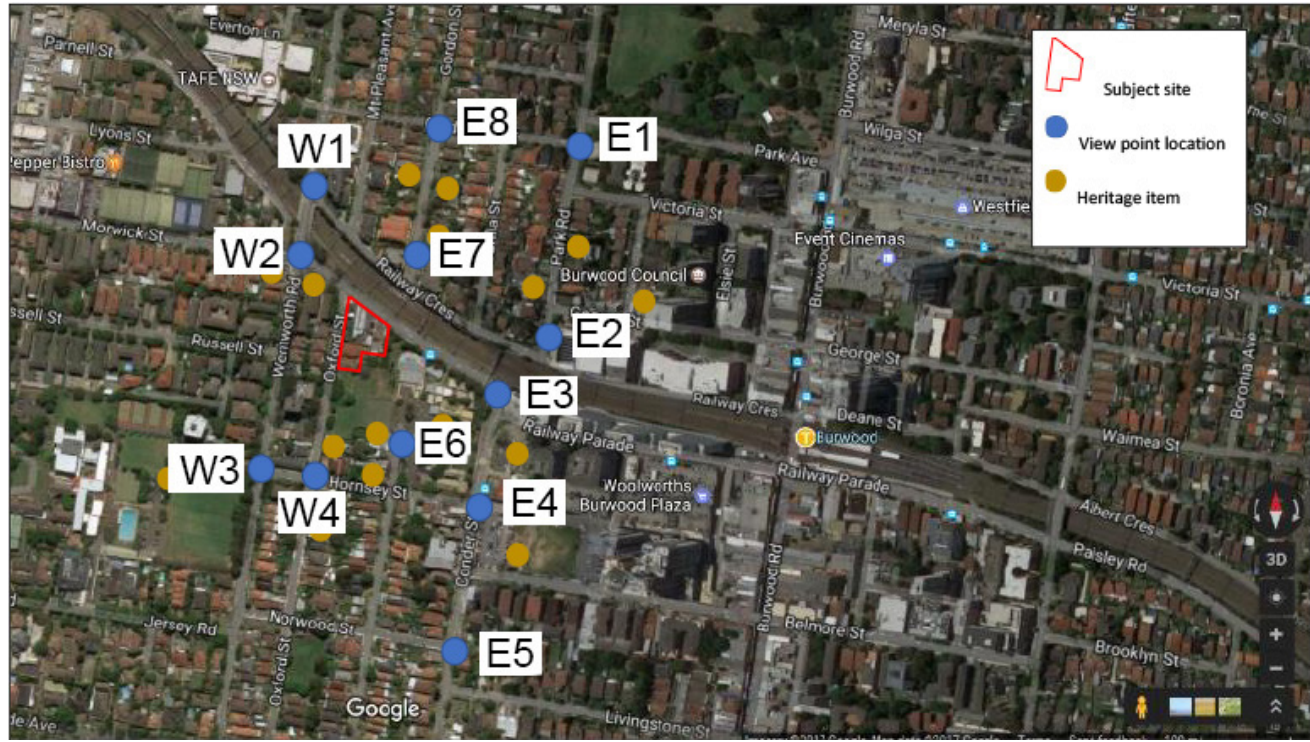
E7 - Gordon St near Railway Crescent



W1 - Cnr Wentworth and Railway Crescent



W2 - Cnr Wentworth Rd and Railway Parade



W3 - Cnr Wentworth Rd and Railway Parade



W4 - Cnr Oxford St and Hornsey St